

Characteristics of the Urban Sewer System and Rat Presence

Xiaocong Guo, MSc

PhD Student at the University of British Columbia



Overview

Background

**Predictive
Modeling**

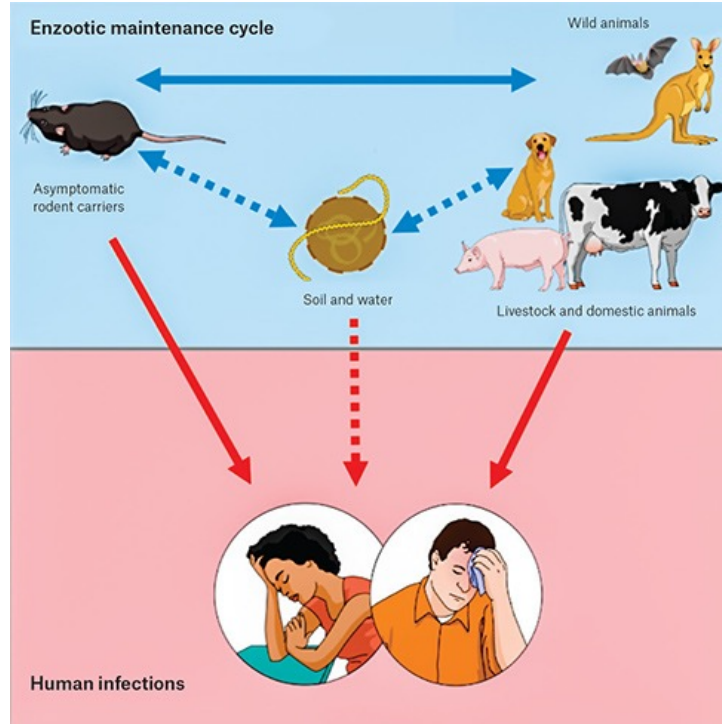
Implications



**Systematic
Review**

**Strengths
and
Limitations**

Why Manage Rats?



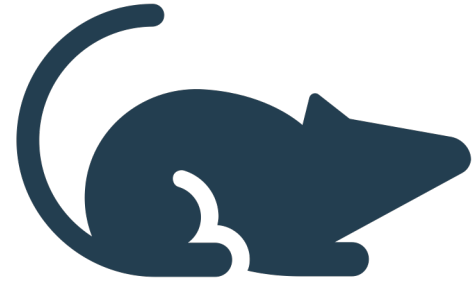
Systematic Review



Predictive Model



Rat Management



A systematic review of Rat Ecology in Urban Sewer Systems

Xiaocong Guo¹  · Chelsea G. Himsworth^{1,2,3}  · Michael J. Lee^{1,3}  · Kaylee A. Byers^{1,3} 

Accepted: 10 August 2022

© The Author(s), under exclusive licence to Springer Science+Business Media, LLC, part of Springer Nature 2022

Urban Ecosystems

<https://doi.org/10.1007/s11252-022-01292-x>

A systematic review of Rat Ecology in Urban Sewer Systems



Xiaocong Guo¹ · Chelsea G. Himsworth^{1,2,3} · Michael J. Lee^{1,3} · Kaylee A. Byers^{1,3}

Urban Ecosystems

<https://doi.org/10.1007/s11252-022-01292-x>

Accepted: 10 August 2022

© The Author(s), under exclusive licence to Springer Science+Business Media, LLC, part of Springer Nature 2022

Sewer Diameter & Flow Rate



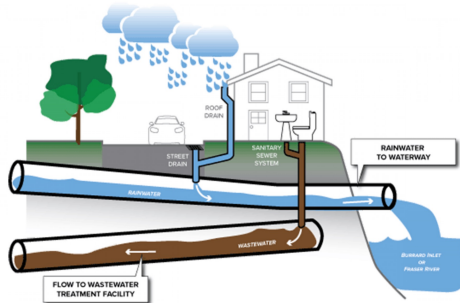
Sewer Materials



Sewer Maintenance



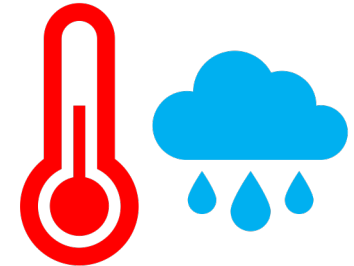
Sanitary vs Storm vs Combined



Residential Zoning & Vegetation Coverage



Temperature & Precipitation



Characteristics of the urban sewer system and rat presence in Seattle

Xiacong Guo¹  · Michael J. Lee^{1,2}  · Kaylee A. Byers^{1,2}  · Leah Helms³ · Kate R. Weinberger¹  ·
Chelsea G. Himsworth^{1,2,4} 

Accepted: 7 June 2022

© The Author(s), under exclusive licence to Springer Science+Business Media, LLC, part of Springer Nature 2022

Urban Ecosystems

<https://doi.org/10.1007/s11252-022-01255-2>

Characteristics of the urban sewer system and rat presence in Seattle

Urban Ecosystems

<https://doi.org/10.1007/s11252-022-01255-2>

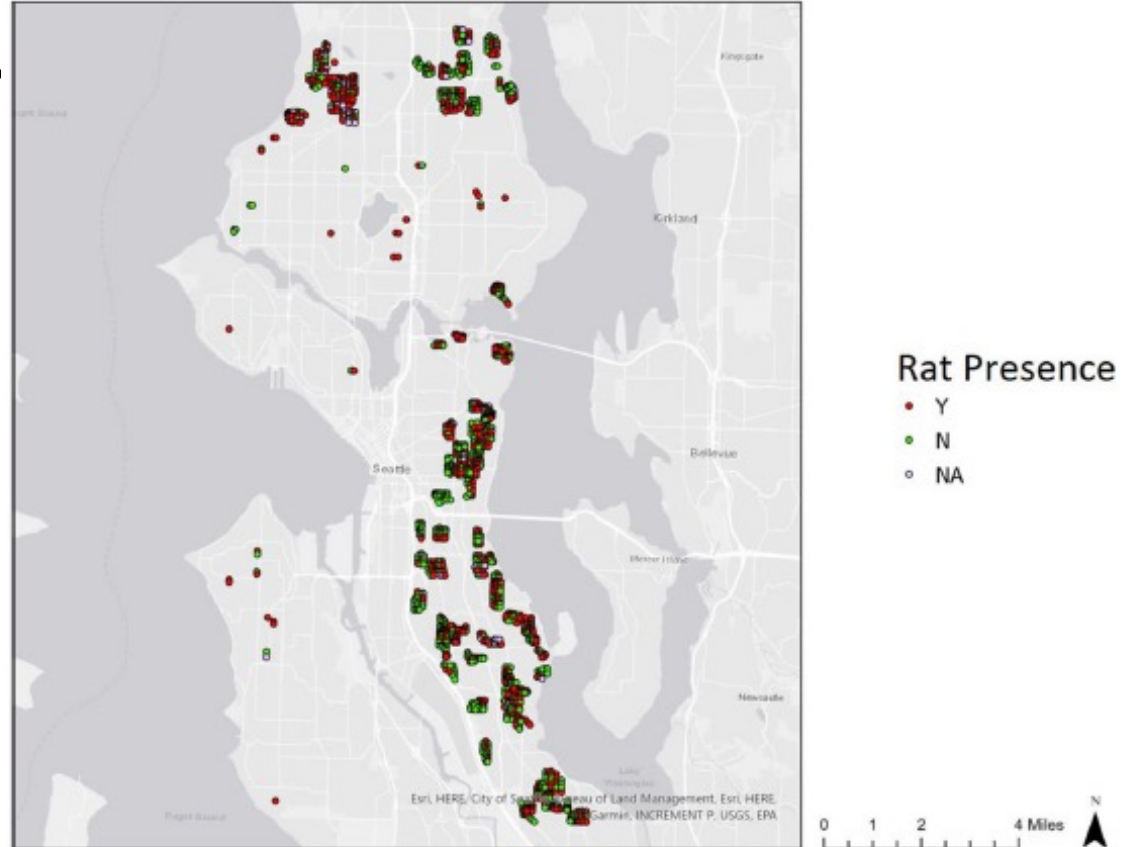


Xiacong Guo¹ · Michael J. Lee^{1,2} · Kaylee A. Byers^{1,2} · Leah Helms³ · Kate R. Weinberger¹ · Chelsea G. Himsworth^{1,2,4}

Accepted: 7 June 2022

© The Author(s), under exclusive licence to Springer Science+Business Media, LLC, part of Springer Nature 20

- Data collected in Seattle
- February 2016 - September 2019
- 1752 baited manholes
- Data
 - Baiting records
 - Manhole characteristics
 - Sewer line characteristics
 - Surface characteristics
 - Meteorological parameters
- Statistical Analysis
 - GAM



Characteristics of the urban sewer system and rat presence in Seattle

Urban Ecosystems

<https://doi.org/10.1007/s11252-022-01255-2>



Xiacong Guo¹ · Michael J. Lee^{1,2} · Kaylee A. Byers^{1,2} · Leah Helms³ · Kate R. Weinberger¹ · Chelsea G. Himsworth^{1,2,4}

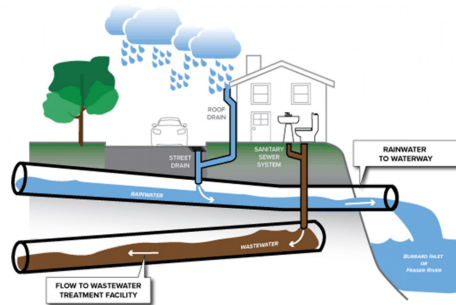
Accepted: 7 June 2022

© The Author(s), under exclusive licence to Springer Science+Business Media, LLC, part of Springer Nature 2022

Narrower Pipes



Sanitary Pipes



Older Pipes



Shallower Pipes



Higher Elevation above Sea Level



Strengths and Limitations



Strengths

Considered the complexity of sewer networks that encompass multiple sewer lines, all comprised of their own unique characteristics

Limitations

Lack of consideration of rat behavior and movement using bait consumption at the manholes

Implications



Sewer rats need to be managed



Target the identified features of the built environment for urban planning and rat management to reduce the carrying capacity for rat populations



Future work: Explore the frequency, location, and drivers of rat movement between above and below ground environments

The Research Team

- Dr. Chelsea Himsworth
- Dr. Kaylee Byers
- Dr. Michael Lee
- The sewer baiting team at the Seattle & King County Public Health

